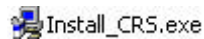


Cimarron BackOfficePlus Installation Instructions

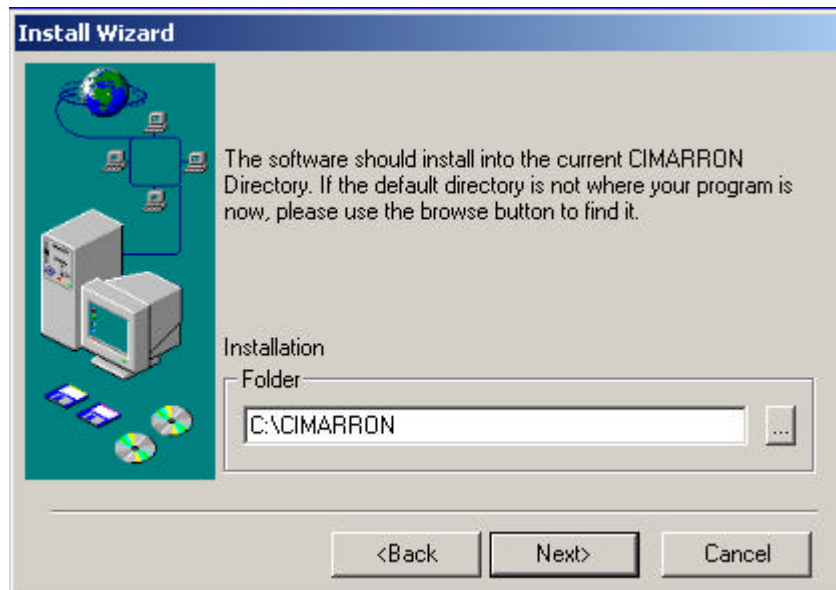
Note: Before beginning, make sure that you back up your Panpoll folder on your C:/ (if you are a Panasonic user) or backup your Cimarron folder on your C:/ (if you are a Micros user).

To install Cimarron BackOfficePlus (once the installer is downloaded from the FTP Site):

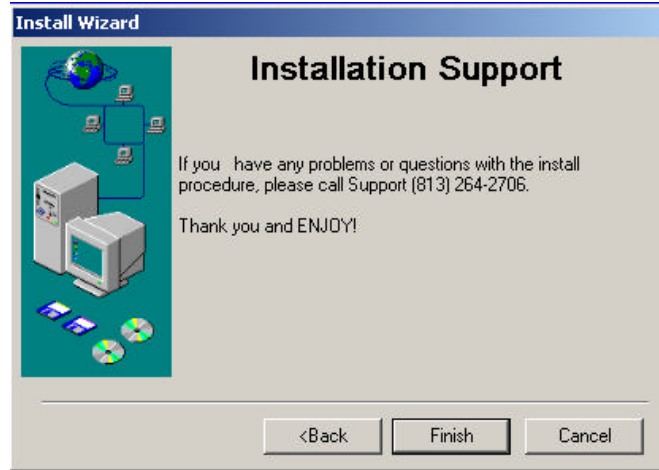
1. Double click on the “**My Computer**” icon.
2. Locate the C:/ and double click on it to open. Choose View from the File Menu and then choose Details from the menu.
3. Scroll down the C:/ until you find the Install_CRS.exe icon. (It will be below all of the folders.) Next double click on “**Install_CRS.exe**”.



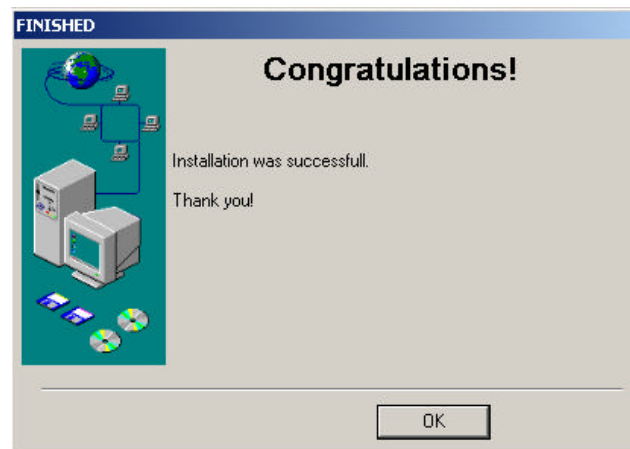
4. Go through the pages of the installer by clicking “**Next**”. The second screen you come to shows where you will be installing Cimarron BackOfficePlus. Stores with Micros computers will install the program into the default C:\CIMARRON folder. **HOWEVER**, Panasonic stores will need to install into the C:\Panpoll folder. Panasonic stores will highlight CIMARRON on the following screen and type the word PANPOLL. Your screen will then say C:\PANPOLL. After making sure the program is installed in the correct folder click on “**Next**”.



5. Click on the “**Finish**” button to complete your installation.



6. Your Old program will now be replaced with the New Program and you will see the following screen. Click “**OK**”. This will take you back to your previously opened windows.



7. Close all windows, and the new CIMARRON BACKOFFICE shortcut will be on your desktop.

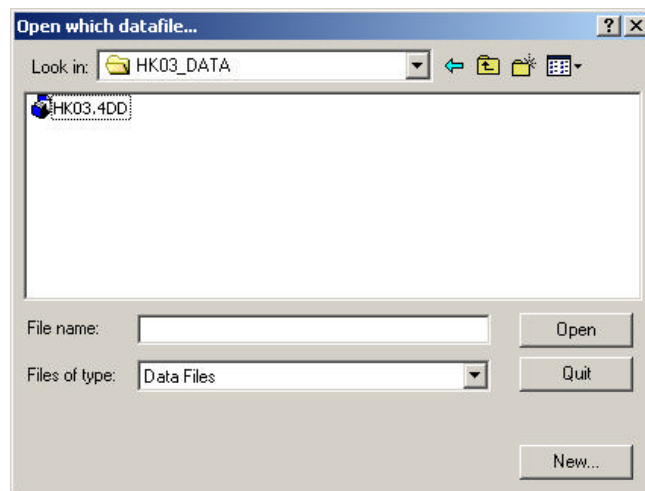


To Open Cimarron BackOfficePlus:

1. Double click the Cimarron BackOfficePlus Icon.
2. Enter your password: Corporate = 2001
Management = 2002
Admin = 2000
CheckOut = 2000

Note: These are the default passwords, but can be customized if you wish.

3. Click the “OK” button once you have chosen your entry level and entered the corresponding password.
4. Your system will prompt you to find a datafile to open, and will probably default to look in your “My Documents” folder. You will need to navigate to the Cimarron folder on your C:\. Do this by clicking the folder with the upturned arrow until you get to the C:\. Double click on either the Panpoll folder (Panasonic users) or the Cimarron folder (Micros users), then double click your “(Unit#)_DATA” folder. See the example below.



5. Highlight the file (Unit#).4DD (In the above example the datafile is named HK03.4DD) and click on the “Open” button. This will open the application with your datafile.

Note: The next time you open the Cimarron BackOfficePlus program it will default to the last datafile opened so you should not have to search for it as you enter the program.

6. Congratulations you have now successfully installed Cimarron BackOfficePlus. If you have any problems with the installation, please call the Cimarron Software Team at (813)264-2706.