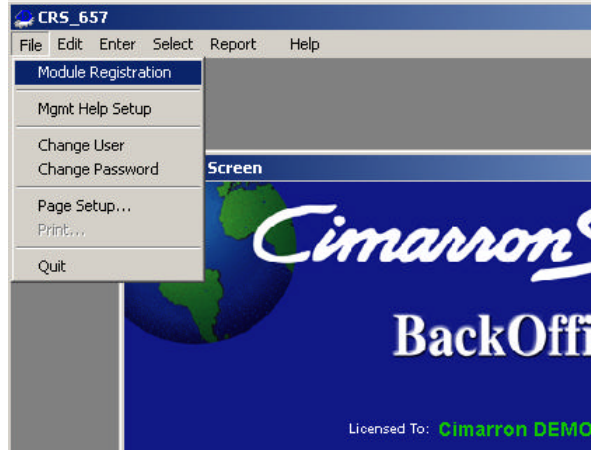
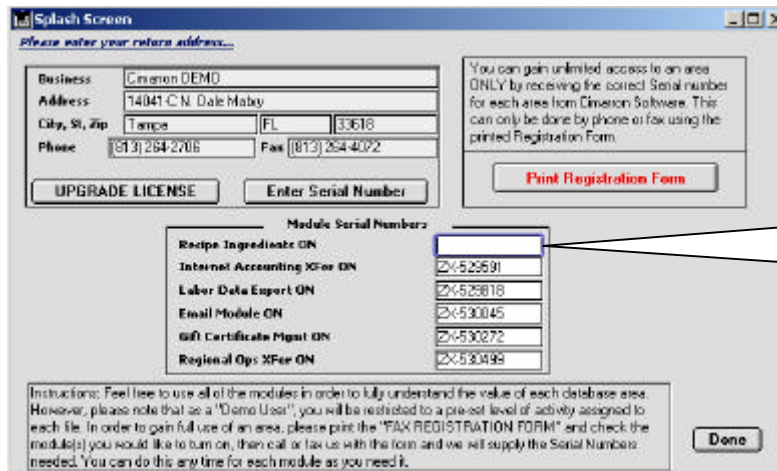


## How to Turn on your Recipe Module

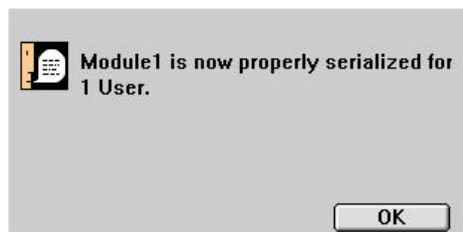
1. From the Splash Screen, go up to “File” and select “Module Registration”.



2. You will see the following screen. Fill in the “Recipe Ingredients ON” with the Serial Number provided by Cimarron Software.

A screenshot of the 'Splash Screen' registration form. The form has a title bar 'Splash Screen' and a subtitle 'Please enter your return address...'. It contains several input fields for business information: Business (Cimarron DEMO), Address (14041 C.N. Dale Mabey), City, St, Zip (Tampa, FL, 33618), Phone ((813) 264-2006), and Fax ((813) 264-4092). There are buttons for 'UPGRADE LICENSE' and 'Enter Serial Number'. A text box on the right explains that unlimited access requires correct serial numbers. Below this is a 'Print Registration Form' button. A section titled 'Module Serial Numbers' lists several modules with their serial numbers: Recipe Ingredients ON (2X-522591), Internal Accounting XFee ON (2X-525818), Labor Data Export ON (2X-530045), G&F Certificate Mgmt ON (2X-530272), and Regional Ops XFee ON (2X-530499). A callout box with a pointer to the 'Recipe Ingredients ON' field contains the text: 'Here's where you will enter your Recipe Serial Number.' At the bottom, there is a 'Done' button and a block of instructions.

3. If you entered the correct Serial Number, you should see the following message.



4. Click on “OK”, and then click the “Done” button to return to the Splash Screen.